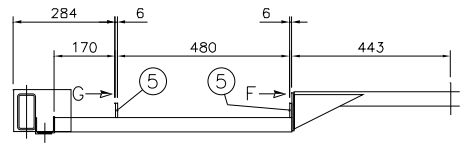


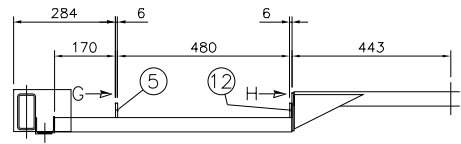
MATERIAL SPECIFICATION						
F1	EN 10025	S355 K2G3C	K ALUMINIUM			
F6	SABS 1431	300W	U RUBBER			
		Z	S/S 304			
		U	RUBBER			
PARTS LIST						
No.	QTY	MAT	STOCK CODE	DESCRIPTION	DIMENSIONS	REFERENCE
1	1	K	8143	STEPBLOC - WALKWAY	475x5722	Ex. 5790 LONG
2	2	K	8138	STEPBLOC - WALKWAY	475x1580	Ex. 1590 LONG
3	6	K	10186	W - BRACKET	FLAT 40x6x838	B.O.P.
4	8	F1	-	WALKWAY SUPPORT	PLATE 6x70x200	
5	3	F6	-	WALKWAY BRACKET	FLAT 6x40x400	
6	4	F1	-	WEAR PLATE	PLATE 6x249x368	
7	2	K	-	SPACER DISC	0/D40 x 1/D11 x 6THK	
8	4	K	-	WALKWAY CUTOUT STIFFENER	FLAT 40x6x506	
9	49	Z	-	NYLOC NUT	M10	
10	6	U	-	WALKWAY CUTOUT BARRIER	3THKx40x506	
11	49	Z	-	BOLT	M10x35	
12	1	F6	-	WALKWAY BRACKET	FLAT 6x40x340	
13	98	Z	-	FIBRE/NYLON WASHERS	M10	
14	98	Z	-	STAIN. STEEL WASHERS	M10	

NOTE:
- ALL WELDING TO BE 4mm C.F.W. U.O.S.

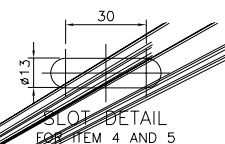
QUANTITIES GIVEN ARE FOR 1-OFF T.C.
50-OFF TANK CONTAINERS IN CONTRACT



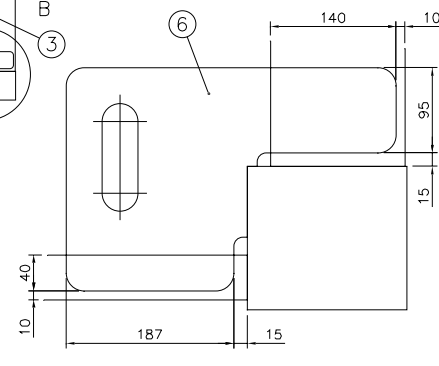
SECTION E-E



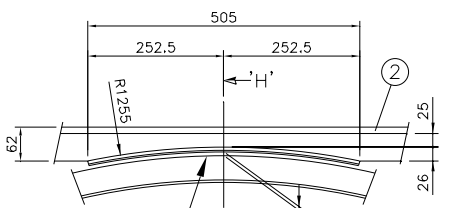
SECTION C-C



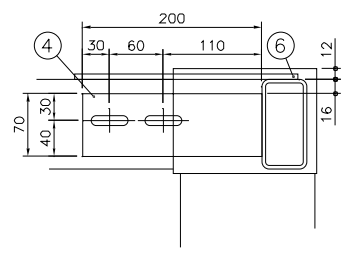
SLOT DETAIL FOR ITEM 4 AND 5



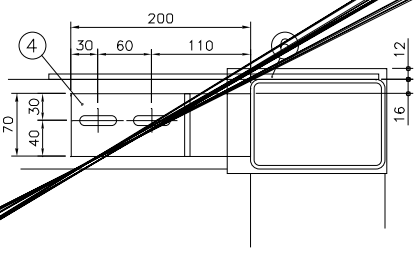
DETAIL D



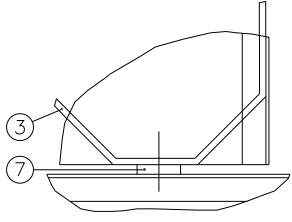
WALKWAY CUTOUT DETAIL



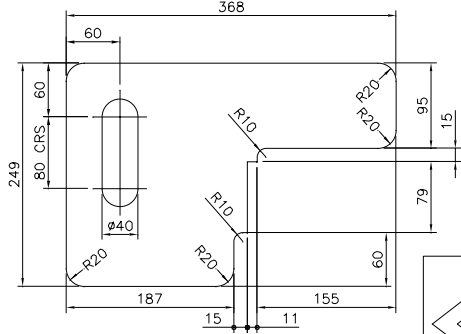
SECTION A-A



SECTION B-B



DETAIL C



DETAIL ITEM 6



CONSANI ENGINEERING (PTY) LTD
ELSIES RIVER, CAPE
SOUTH AFRICA
TEL. 590-3400
FAX. 591-2825

INTERMODAL CONTAINERS

THIS DRAWING AND INFORMATION IS THE PROPERTY OF CONSANI ENG. (PTY) LTD AND MAY NOT BE REVEALED TO ANY THIRD PARTY WITHOUT OUR WRITTEN PERMISSION.
CAD: 24422377g

25000L BEAM TANK CONTAINER
WALKWAY DETAILS AND ASSEMBLY
MODEL HO3

REVISION E			REVISION D			REVISION C			REVISION B			REVISION A			DRAWING APPROVAL			REQUIRED TOLERANCE	NOMINAL DIMENSIONS (SHORT SIDE OF TRIANGLE)						NOMINAL DIMENSIONS										
AUTHORITY	SIGN.	DATE	DESCRIPTION	AUTHORITY	SIGN.	DATE	DESCRIPTION	AUTHORITY	SIGN.	DATE	DESCRIPTION	AUTHORITY	SIGN.	DATE	DESCRIPTION	AUTHORITY	SIGNATURE		DATE	DEGREES	MINUTES	ABOVE	ABOVE	ABOVE	ABOVE	ABOVE	ABOVE	ABOVE	ABOVE	ABOVE	ABOVE	ABOVE	ABOVE	ABOVE	
DRAWN				DRAWN				DRAWN				DRAWN				DESIGN	S.E.	14/02/02	0	0	0	0	0	0	0	0	0	0	0	0	0	0	0	0	
DESIGN				DESIGN				DESIGN				DESIGN				INSPECTION	A.L.	14/02/02	± 0.1	± 0.1	± 0.1	± 0.1	± 0.1	± 0.1	± 0.1	± 0.1	± 0.1	± 0.1	± 0.1	± 0.1	± 0.1	± 0.1	± 0.1		
QUALITY ASSURANCE				QUALITY ASSURANCE				QUALITY ASSURANCE				QUALITY ASSURANCE				CONTRACTS			± 0.1	± 0.1	± 0.1	± 0.1	± 0.1	± 0.1	± 0.1	± 0.1	± 0.1	± 0.1	± 0.1	± 0.1	± 0.1	± 0.1	± 0.1	± 0.1	
CONTRACTS				CONTRACTS				CONTRACTS				CONTRACTS				INSPECTION			± 0.1	± 0.1	± 0.1	± 0.1	± 0.1	± 0.1	± 0.1	± 0.1	± 0.1	± 0.1	± 0.1	± 0.1	± 0.1	± 0.1	± 0.1	± 0.1	
INSPECTION				INSPECTION				INSPECTION				INSPECTION				CLIENT			± 0.1	± 0.1	± 0.1	± 0.1	± 0.1	± 0.1	± 0.1	± 0.1	± 0.1	± 0.1	± 0.1	± 0.1	± 0.1	± 0.1	± 0.1	± 0.1	
AUTHORITY				AUTHORITY				AUTHORITY				AUTHORITY							± 0.1	± 0.1	± 0.1	± 0.1	± 0.1	± 0.1	± 0.1	± 0.1	± 0.1	± 0.1	± 0.1	± 0.1	± 0.1	± 0.1	± 0.1	± 0.1	± 0.1

CLIENT		SCALE	1:15 1:5 1:3	DRAWING NUMBER	2442-02-2377	REVISION	A
WORKS ORDER		DRAWN	RASHAAD	CHECKED		DATE	13/02/02