

### Loading Through Top Outlet

1. Refer to "Before Loading"  
[Click here to view 'Before loading'](#)
2. Check that all bottom valves are closed.

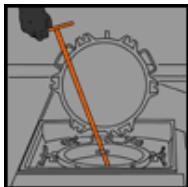


enlarge

3. Remove top outlet blank flange. Bolt hose coupling to top outlet flange.
4. Connect vapour return line and open valve to vent tank.
5. Load tank to required level. Check constantly for leaks in hoses and connections.
6. Drain hose, close top outlet valve and remove from tank. Replace top outlet blank flange.
7. Close airline valve, disconnect vapour return line and replace blanking cap.
8. refer to section "After Loading"  
[Click here to view "After Loading"](#)

### Loading Through Manhole

1. Refer to "Before Loading"  
[Click here to view 'Before loading'](#)
2. Check that all tank bottom valves are closed.
3. Open manlid and insert hose into tank.
4. Secure hose to stop possible whiplash
5. Load tank to required level. Check constantly for leaks in hoses and connections.



enlarge

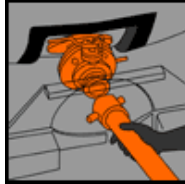


enlarge

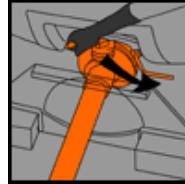
6. Drain hose and remove from tank.
7. Close manlid and tighten down

### Loading Through The Bottom Outlet

1. Refer to "Before Loading"  
[Click here to view 'Before loading'](#)
2. Remove bottom outlet blank flange or cap connect hose ensuring connection is correct and tight. Open valves.



enlarge



enlarge

3. Connect vapour return line and open valve to vent tank.

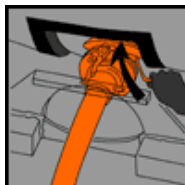


enlarge

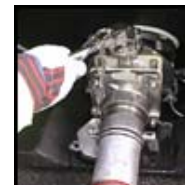


enlarge

4. Open valve. Load tank to required level. Check constantly for leaks in hoses and connections.



enlarge



enlarge

### 5. Tanks with foot valve and external valve:

- Close valve and then drain hose.
- Disconnect hose and replace blanking cap

### Tanks with foot valve and external valve:

Close foot valve. Drain hose. Close external valve. Disconnect hose and replace blanking cap or flange. (This sequence is important to ensure that no product remains between foot valve and external valve).

6. Close airline valve and disconnect vapour return line and replace blanking cap.

7. Refer to section "After Loading"  
[Click here to view "After Loading"](#)


[Click here to view 'Before loading'](#)


[Click here to view "After Loading"](#)

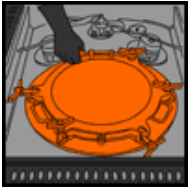
### Safety points to note during loading and discharge

There will always be a pressure difference between a closed tank and atmosphere. Valves must be opened carefully. Always relieve pressure before opening the manlid. Do not stand on the manlid when loosening wing nuts. When using the bottom outlet always open or close the foot valve first.

Manlid wing nuts need only be handtight. If the seal is in a serviceable condition, further tightening will not be necessary. Never enter a tank until all the safety recommendations have been complied.

 Product approval list (RID / ADR) Oddy TASU 116 series (26k)

 Product approval list (IMDG) IMDG - 5A Oddy TASU 116 series (26k)



enlarge



enlarge

8. Refer to "After Loading"  
[Click here to view "After Loading"](#)